



# Auto Retract Vehicle Earthing Reels



## For use on:

- Construction Vehicles
- Maintenance Vehicles
- Utility Vehicles
- Rescue & HazMat Vehicles

- ♦ Easy cable pay-out.
- ♦ Quick and convenient rewind gets you back in service fast.
- ♦ Heavy-duty steel construction stands up to demanding field use.
- ♦ Direct access to lube rotary ground device.
- ♦ Serviceable pawl and pin assembly.
- ♦ Independently tested to 43 kA for 30 cycles.\*
- ♦ Bolt-down design.
- ♦ Helps meet OSHA requirements for vehicle grounding.\*\*
- ♦ Supplied with or without optional cable & clamp.



WEB: [www.austutilities.com.au](http://www.austutilities.com.au)  
EMAIL: [sales@austutilities.com.au](mailto:sales@austutilities.com.au)

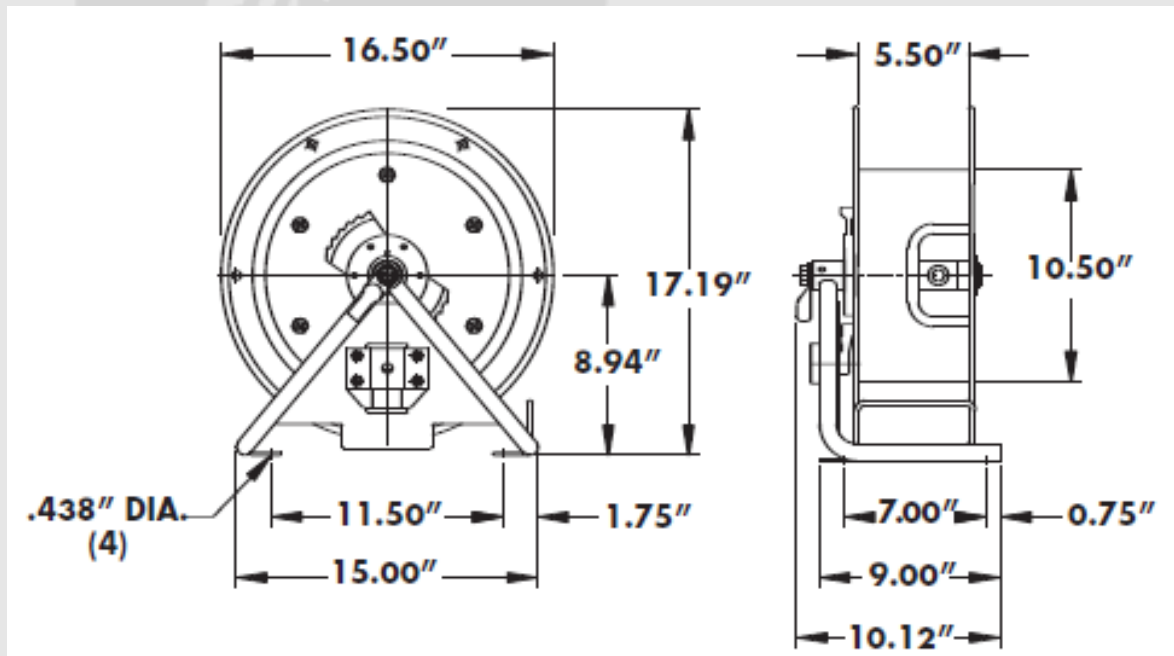
PHONE: 08 9406 3200



# Auto Retract Vehicle Earthing Reels

## Spring Rewind Vehicle Earthing Reel

- Fast, convenient automatic spring rewind.
- A ratchet mechanism locks the reel.
  - Built-in cable hoop.
  - Internal rotary device.
- Parts list drawing, request ISO 95.



Cable Capacity of Reel <u>feet</u> m.			Approx. Weight <u>lb.</u> kg	
Gauge of Conductor				
#2	1/0	2/0		
0.5 O.D. (in) 13 O.D. (mm)	0.63 O.D. (in) 16 O.D. (mm)	0.66 O.D. (in) 17 O.D. (mm)	NET (less cable)	SHIP (less cable)
75 22.9	75 22.9	65 19.8	43 20	52 24

**CUSTOM SIZES ALSO AVAILABLE ON REQUEST**



WEB: [www.austutilities.com.au](http://www.austutilities.com.au)  
EMAIL: [sales@austutilities.com.au](mailto:sales@austutilities.com.au)

PHONE: 08 9406 3200